



GOOD MORNING

Have Good Trading Day

WEDNESDAY



Price is what you pay.  
Value is what you get.

- Warren Buffet

## MARKET PULSE

### INDIAN INDICES

NAME	CMP	NET CH.	%
SENSEX	23410	-378	-1.59
NIFTY	7109	-125	-1.73

### INDIAN ADR'S

SYMBOL	CLOSE	GAIN/ LOSS %
DRREDDY	44.53	-0.80
HDFCBANK	52.78	-2.53
ICICIBK	5.44	-0.28
INFY	16.65	-0.24
TATAMOTOR	23.04	-0.92
WIPRO	11.40	-0.15

### FII AND MF ACTIVITY

SYMBOL	In Crs.
FIIs Eq (Provisional)	-289.66
FIIs Index Future	216.00
FIIs Index Options	-1727.52
FIIs Stock Future	867.30
FIIs Stock Options	-115.46
DII's Eq (Provisional)	257.93

### CURRENCY

RBI RATE	23-FEB-2016
RUPEE - \$	68.6408
EURO	75.7657
YEN 100	61.1200
GBP	96.8934

## MARKET PULSE

### GLOBAL INDICES

NAME	CMP	NET CH.	%
DOW	16431	-188	-1.14
NASDAQ	4503	-67	-1.47
NIKKEI	15948	-103	-0.65
HANG SENG	19202	-212	-1.10
SGX NIFTY	7105	-3	-0.05

### WORLD COMMODITIES

FUTURE	U\$\$	CHANGES
CRUDE	31.32	-0.55
NATURAL GAS	1.827	-0.002
GOLD	1228.3	+5.7
SILVER	15.300	+0.060
COPPER	2.0955	-0.0135

### WORLD EVENTS

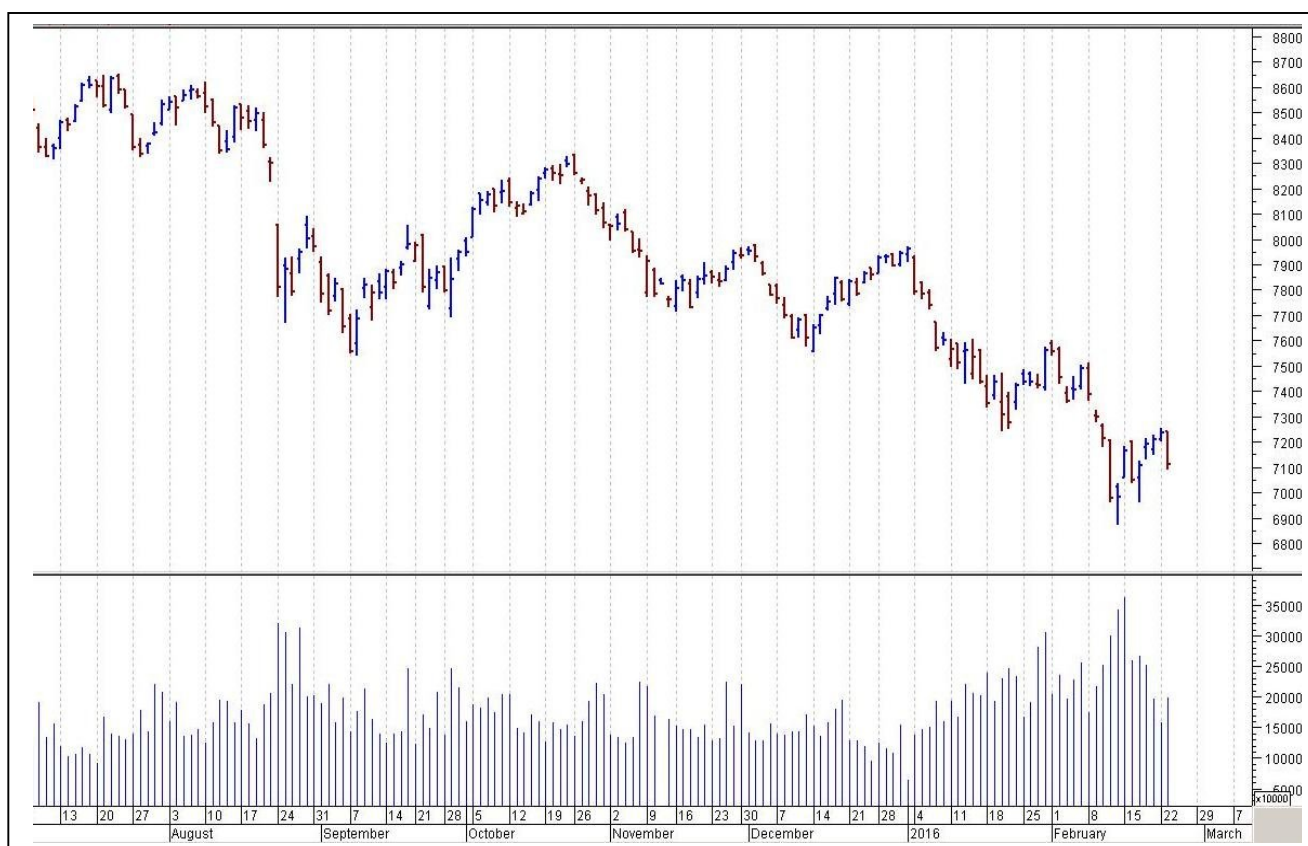
- US:FOMC Member Fischer Speaks
- Crude Oil Inventories
- UK:BBA Mortgage Approvals
- CBI Realized Sales
- MPC Member Cunliffe Speaks

## TOP STORY

- NCC arm NCC Infra Holdings & Soma Ent To Sell Stake In Bangalore Elevated Tollway for `750 cr
- PNB Bank Declares Names Of 904 Borrowers As Wilful Defaulters that Owe `10,870 Cr As On December 31
- Tata Motors Says: Around 300 Workers Went On Flash Strike Today At Co'sSanand Plant Protesting Against Suspension Of Other Workers For Misconduct
- Maruti Suzuki Resumes Production Of Vehicles In Gurgaon &Manesar Facilities
- Dabur (ToI) to make Ayurvedic drugs for diabetes and malaria
- Asian Paints: Mauritius Unit Transfers 60% Stake In SCIB Chem To Berger International
- Wipro Partners With SugarCRM To Deploy CRM Solutions For Global Enterprises
- Stan Chart IDR: Stand Chart PLC posts 1st loss in 26 years, posts pretax loss of \$1.5 bn
- SREI plans to launch `2000 cr stressed assets fund



## NIFTY CHART



## MARKET COMMENTARY

The market lost more than 1.5 percent on Tuesday after rallying in previous four consecutive sessions. Profit booking and global weakness caused selling pressure. The 30-share BSE Sensex fell 378.61 points or 1.59 percent to 23410.18, dragged by banks, FMCG and infra stocks. The 50-share NSE Nifty touched an intraday low of 7090.70, before closing at 7109.55, down 125 points or 1.73 percent. Overall sentiment continues to remain weak, adding financials, which have been dragging the Nifty down, will continue to remain under pressure in the next series as well. For today's trade Nifty likely to trade in the range between 7110 – 7220 in the upper side and 7080 – 7000 in the lower side.

### MARKET LEVELS

	CMP	SUPPORT LEVELS				RESISTANCE LEVELS			
NIFTY	7110	7080	7050	7020	6980	7140	7175	7200	7225
USDINR	68.63	68.55	68.50	68.42	68.35	68.70	68.78	68.85	68.92





#### BULK DEALS (BSE)

SCRIP	CLIENT NAME	BUY/SELL	QUANTITY	PRICE
INTELLCAP	OLUMPUS CONSTRUCTION PRIVATE LIMITED	B	290,000	27.75
STEELCAS	ABHAY BHAGWANDAS DOSHI	S	150,000	60

#### BULK DEALS (NSE)

SCRIP	CLIENT NAME	BUY/SELL	QUANTITY	PRICE
KCP	SANDHYA G PARIKH	BUY	1425449	62.98
KCP	SBI MUTUAL FUND MAGNUM EQUITY FUND	SELL	1700000	63.01
AMTL	OMEGA FINHOLD PRIVATE LTD.	BUY	89000	22
AMTL	CONSORTIUM SECURITIES PRIVATE LTD.	SELL	130000	22

#### SCRIP'S IN F&O BAN

(To resume for normal trading below 80% of market wide limit required)

JISLJALEQS, INDIACEM, JINDALSTEL, IBREALEST

#### Initial Public Offering (IPO)

Company Name	Security type	Issue Start Date	Issue End Date	Status
NIL				



NIFTY 50 STOCKS: SUPPORT & RESISTANCE						
Symbol	Close	Support 1	Support 2	Pivot Point	Resistance1	Resistance2
ACC	1244	1229	1214	1256	1270	1297
ADANI PORTS	204	202	200	205	208	211
AMBUJACEM	194	192	191	194	196	198
ASIANPAINT	877	869	861	874	883	888
AXISBANK	385	380	374	389	394	403
BAJAJ-AUTO	2396	2362	2328	2421	2455	2514
BANKBARODA	133	130	128	135	137	142
BHARTIARTL	321	315	309	324	330	339
BHEL	98	97	95	100	101	104
BOSCHLTD	16848	16582	16316	17016	17282	17716
BPCL	736	724	712	743	755	774
CAIRN	126	123	120	128	131	136
CIPLA	523	516	509	524	531	540
COALINDIA	301	296	291	305	310	319
DRREDDY	3081	3048	3016	3099	3131	3182
GAIL	317	313	310	319	323	329
GRASIM	3408	3360	3313	3428	3475	3543
HCLTECH	829	821	813	835	843	857
HDFC	1051	1040	1029	1051	1062	1073
HDFCBANK	970	962	954	974	982	993
HEROMOTOCO	2661	2638	2615	2675	2698	2736
HINDALCO	69	67	65	69	71	73
HINDUNILVR	837	828	819	843	852	867
ICICIBANK	192	188	185	194	198	203
IDEA	107	104	101	107	110	113
INDUSINDBK	840	832	824	839	847	853
INFY	1124	1116	1108	1124	1132	1141
ITC	294	292	290	295	297	300
KOTAKBANK	623	616	608	627	635	646
LT	1130	1118	1106	1137	1149	1168
LUPIN	1778	1755	1731	1787	1811	1844
M&M	1209	1195	1180	1218	1232	1255
MARUTI	3487	3455	3424	3512	3544	3600
NTPC	124	123	122	124	125	126
ONGC	215	212	209	215	218	221
PNB	73	72	71	73	74	76
POWERGRID	137	136	134	138	139	142
RELIANCE	950	939	929	953	964	978
SBIN	159	156	154	161	163	168
SUNPHARMA	871	859	846	879	891	911
TATAMOTORS	319	314	309	319	324	330
TATAPOWER	58	58	57	58	59	60
TATASTEEL	254	250	246	256	259	265
TCS	2264	2241	2217	2280	2304	2343
TECHM	429	424	420	428	433	437
ULTRACEMCO	2816	2771	2726	2854	2899	2982
VEDL	73	72	70	74	75	77
WIPRO	540	536	532	540	544	548
YESBANK	686	673	659	695	709	731
ZEEL	387	381	375	388	394	400



## NEWS & RUMOURS:

- Gold (Spot Dollar) major support = \$1195/\$1170 & Resistance = \$1249/\$1281.
- Crude oil range->\$30 to \$40.
- U.S. Stocks Fall as Yen Gains With Gold on China Yuan Fixing: - Investors got a reminder on Tuesday of the potential for China's currency moves to jar financial markets. A rally in global equities that pushed benchmark gauges in Europe and America to multi-week highs faltered after the People's Bank of China [reduced](#) the Yuan's reference rate by the most in six weeks. The yen rose with gold on haven demand, while Treasuries declined for a third day. American crude slipped below \$33 a barrel after Iran called a proposal by Saudi Arabia and Russia to freeze oil production "[ridiculous](#)."
- Barclays Says Sharp Yuan Devaluation Needed to Shift Psychology: - A sharp, one-off devaluation of the yuan is among options China's central bank might consider to stem capital outflows and shift market psychology to appreciation from depreciation, according to Barclays Plc.
- Indian stocks head for first fall in 5 sessions as oil rally falters: - Indian shares fell on Tuesday, poised for their first drop after four sessions of gains, as investors were shaky just ahead of the Union Budget next week, and after a torrid session in Asia following weak oil prices. Asian shares retreated from a seven-week high on Tuesday as the oil price rally that boosted global equity markets reversed amid worries over supply glut.
- Zinc retreated 2.1 percent on the London Metal Exchange, falling from its highest close in four months. Copper, lead and nickel also fell. Gold led precious metals higher, gaining 1.1 percent to \$1,221.45 an ounce as investor holdings in exchange-traded funds jump to the highest in almost a year.

## TRENDS & OUTLOOK – DATE: 24- Feb- 2016

### PRECIOUS METALS:

COMMDITY (MCX)	S2	S1	PIVOT POINT	R1	R2
GOLD (Apr)	28710	28966	29265	29570	29850
SILVER (Mar)	35001	36100	37200	38400	39139

### BASE METALS

COMMDITY (MCX)	S2	S1	PIVOT POINT	R1	R2
COPPER (Feb)	309	313	318	323	327
ZINC (Feb)	114.10	116.55	119.70	122.20	124.70
LEAD (Feb)	111.60	114.10	117.30	119.50	122.20
NICKEL (Feb)	561	577	594	609	627

### ENERGY

COMMDITY (MCX)	S2	S1	PIVOT POINT	R1	R2
CRUDE OIL (Mar)	2001	2121	2265	2345	2466
NATURAL GAS (Feb)	113	118	125	131	136

### DATE TALKS : TODAY'S ECONOMIC DATA :

FOMC Member Fischer Speaks, Flash Services PMI, New Home Sales, Crude Oil Inventories, MPC Member Cunliffe Speaks of GBP.





Registered Office

Indira House, 3rd Floor, 5 Topiwala Lane,  
Opp. Lemington Road Police Station, Grant Road (East), Mumbai - 400007.

Corporate Office

'Ramavat House' E-15, Saket Nagar, Indore - 452018 (M.P.)

Customer Care

Tel: +91-731-4097170/ 71/ 72/ 73/ 74 M. +91 93031 72345

Email: [customercare@indiratrade.com](mailto:customercare@indiratrade.com) [www.indiratrade.com](http://www.indiratrade.com)



INSTITUTIONAL DEALING UNIT

Africa House, 5, Topiwalla Lane, Lamington Road, Mumbai, 400007

Tel: +91 22 30080678 Fax : +91 22 23870767 Email : [ie@indiratrade.com](mailto:ie@indiratrade.com)

**Disclaimer**

This report is for private circulation within the Indira Group. This report is strictly confidential and for information of the selected recipient only and may not be altered in any way, transmitted to, copied or distributed, in part or in whole, to any other person or to the media or reproduced in any form. This report should not be construed as an offer or solicitation to buy or sell any securities or any interest in securities. It does not constitute a personal recommendation or take into account the particular investment objectives, financial situations, or any such factor. The information, opinions estimates and forecasts contained here have been obtained from, or are based upon, sources we believe to be reliable, but no representation of warranty, express or implied, is made by us to their accuracy or completeness. Opinions expressed are our current opinions as of the date appearing on this material only and are subject to change without notice.